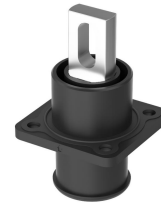
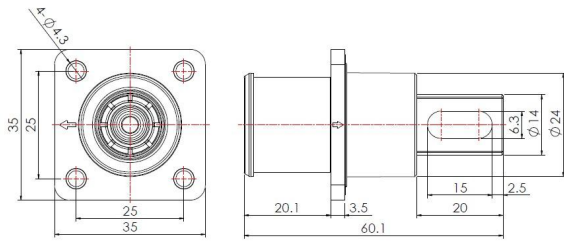


## 250A High current Receptacle-Round interface-Copper basbar (Black)



**Typecode** PW08RB7RU01  
**ID** 1010020000029

### Technical Data

Connector	
Contacts	Copper alloy silver-plated
Housing	PA66+GF,Black
Sealing	SR
Flame retardant grade	UL94 V-0
Protection class	IP67(inserted together)
Connection mode	Copper busbar
Coupling nut of copper busbar	M6 x 1
Tightening torque of copper busbar	4.5 N·m ~ 5.0 N·m
Screw-in thread	M4
Tightening torque of flange	0.6 N·m ~ 0.8 N·m
Working temperature	-40 °C ~ +125°C

Electrical performance	
Rated withstand voltage	1500 V/DC
Rated current	250 A MAX
Withstand voltage	DC 6800 V
Temperature rise	≤45 K
Insulation resistance	10000 MΩ(Room temperature)
Pollution degree	II

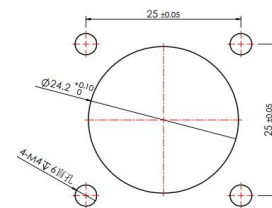
Mechanical and chemical properties	
Insertion force	≤75 N
Extraction force	≤10 N
Mechanical lifespan	≥100 Mating cycles

Approval	
UL	4128
TUV	2pfg2740

### Features

- 360° free rotation
- Protection against electric shock
- RoHS-compliant
- Anti misplug
- Push button unlocking
- UL4128-compliant

### Recommended opening size



**Commercial data**

Weight	45 g
Packaging unit	1 pc
Country of origin	CN

\* 这里所列的是设计数据，有关产品的变更不在此做说明，未尽事宜请联系客服。用户有责任验证功能、符合适用的法律和指令以及在特定应用中的电气安全。