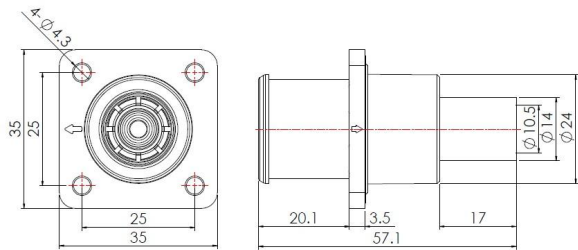


## 250A High current Receptacle-Crimping interface-50mm<sup>2</sup> (Black)



**Typecode** PW08RB7RC02  
**ID** 1010020000034

### Technical Data

| Connector                   |                            |
|-----------------------------|----------------------------|
| Contacts                    | Copper alloy silver-plated |
| Housing                     | PA66+GF, Black             |
| Sealing                     | SR                         |
| Flame retardant grade       | UL94 V-0                   |
| Protection class            | IP67(inserted together)    |
| Connection mode             | Crimping                   |
| Screw-in thread             | M4                         |
| Tightening torque of flange | 0.6 N·m ~ 0.8 N·m          |
| Working temperature         | -40 °C ~ +125°C            |

| Electrical performance |                            |
|------------------------|----------------------------|
| Rated voltage          | 1500 V/DC                  |
| Rated current          | 200 A MAX                  |
| Withstand voltage      | DC 6800 V                  |
| Temperature rise       | ≤ 45 K                     |
| Insulation resistance  | 10000 MΩ(Room temperature) |
| Pollution degree       | II                         |

| Mechanical and chemical properties |                     |
|------------------------------------|---------------------|
| Insertion force                    | ≤ 75 N              |
| Extraction force                   | ≤ 10 N              |
| Mechanical lifespan                | ≥ 100 Mating cycles |

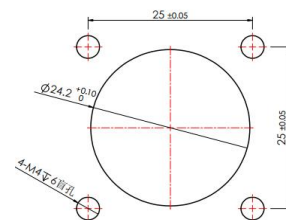
| Cable              |                    |
|--------------------|--------------------|
| Core cross-section | 50 mm <sup>2</sup> |
| Cable diameter     | 13 mm ~ 14 mm      |

| Approval |          |
|----------|----------|
| UL       | 4128     |
| TUV      | 2pfg2740 |

### Features

- 360° free rotation
- Protection against electric shock
- RoHS-compliant
- Anti misplug
- Push button unlocking

### Recommended opening size



**Commercial data**

|                   |      |
|-------------------|------|
| Weight            | 44 g |
| Packaging unit    | 1 pc |
| Country of origin | CN   |

\* 这里所列的是设计数据，有关产品的变更不在此做说明，未尽事宜请联系客服。用户有责任验证功能、符合适用的法律和指令以及在特定应用中的电气安全。