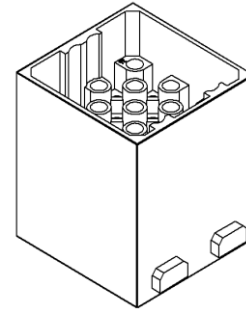
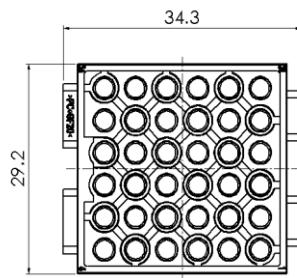
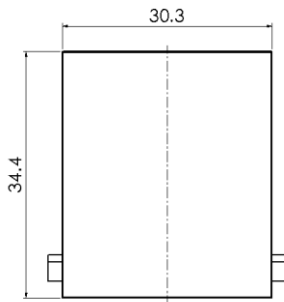


HM Series, Crimp Connection, 36 pin, Male insert



Typecode HMDD-036-MC-1
ID 1 007 04 000071

技术数据

Product Properties

Series	HM
Mating with	Single module
Connection mode	Crimp termination
Gender	Male
Rated voltage	400 V
Rated current	10 A
Rated impulse voltage	6 kV
Mating contact	10A(DSM/DGM)
Number of pins	36
Core cross-section/Clamping ability	0.14 ~ 2.5 mm ² /AWG26 ~ AWG14
Pollution degree	3
Insulation resistance	≥ 10 ¹⁰ Ω
Limiting temperature	-40 °C ~ +125 °C
Standard	EN 60664-1, IEC 61984

Insert

Material	PC
Colour	RAL 7032

Commercial data

Weight	0.018 kg
Packaging unit	1 pc
Country of origin	CN

Features

- High quality engineering plastics
- Crimp termination
- ≥ 500 Mating cycles
- Approval: CE
- RoHS-compliant

*这里所列的是设计数据, 有关产品的变更不在此做说明, 未尽事宜请联系客服。用户有责任验证功能、符合适用的法律和指令以及在特定应用中的电气安全。