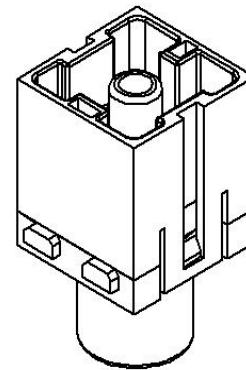
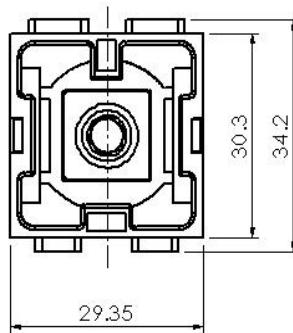
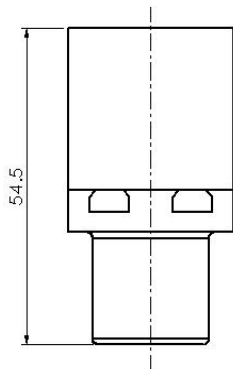


## HM Series, Axial screw terminal,2 pin, Male module



**Typecode** HM200-001-M-1  
**ID** 1 007 04 000009

### Technical Data

#### Product Properties

Series	HM
Size of the module	module frames
Connection mode	Axial screw terminal
Gender	Male
Rated voltage	1000V
Rated current	200A
Rated impulse voltage	8KV
Number of pins	1
Core cross-section/Clamping ability	25 ~ 40mm <sup>2</sup> /AWG4 ~ AWG2
Pollution degree	3
Insulation resistance	≥10 <sup>10</sup> Ω
Temperature range	-40°C ~ +125°C
Tightening torque	25mm <sup>2</sup> @8Nm
	35mm <sup>2</sup> @8Nm
	40mm <sup>2</sup> @9Nm
Standard	EN 60664-1 IEC 61984

#### Insert

Material	PC
Colour	Gray (RAL 7032)
Contact material	Copper alloy silver plating

#### Commercial data

Weight	0.0736kg
Packaging unit	1 pc
Country of origin	CN

### Features

- High quality engineering plastics
- Axial screw terminal
- ≥500 Mating cycles
- Approval: UL, CE
- RoHS-compliant

\*这里所列的是设计数据，有关产品的变更不在此做说明，未尽事宜请联系客服。用户有责任验证功能、符合适用的法律和指令以及在特定应用中的电气安全。