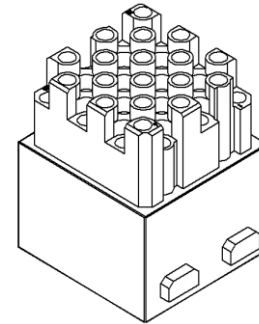
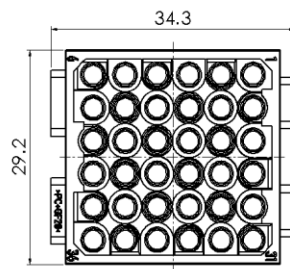
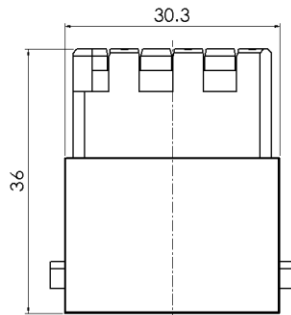


## HM Series, Crimp Connection, 36 pin, Femle insert



Typecode HMDD-036-FC-1  
ID 1 007 04 000072

### Technical Data

#### Product Properties

|                                     |   |
|-------------------------------------|---|
| Series                              | HM  |
| Mating with                         | Single module                             |
| Connection mode                     | Crimp termination                         |
| Gender                              | Femle                                     |
| Rated voltage                       | 400 V                                     |
| Rated current                       | 10 A                                      |
| Rated impulse voltage               | 6 kV                                      |
| Mating contact                      | 10A(DSF/DGF)                              |
| Number of pins                      | 36  |
| Core cross-section/Clamping ability | 0.14 ~ 2.5 mm <sup>2</sup> /AWG26 ~ AWG14 |
| Pollution degree                    | 3   |
| Insulation resistance               | ≥10 <sup>10</sup> Ω                       |
| Limiting temperature                | -40 °C ~ +125 °C                          |
| Standard                            | EN 60664-1, IEC 61984                     |

#### Insert

|          |          |
|----------|----------|
| Material | PC       |
| Colour   | RAL 7032 |

#### Commercial data

|                   |          |
|-------------------|----------|
| Weight            | 0.022 kg |
| Packaging unit    | 1 pc     |
| Country of origin | CN       |

### Features

- High quality engineering plastics
- Crimp termination
- ≥500 Mating cycles
- Approval: CE
- RoHS-compliant

\*这里所列的是设计数据，有关产品的变更不在此做说明，未尽事宜请联系客服。用户有责任验证功能、符合适用的法律和指令以及在特定应用中的电气安全。